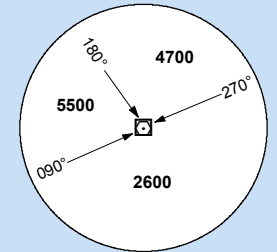




ELEV, ALT & HGT IN FEET
DIST IN NM
BRG ARE MAG
VAR 28°W (2015)

NOTE
PROCEDURE TURN APPROACH APPLICABLE
ONLY WITHIN 30° OF THE OUTBOUND HDG.
USE PHRASEOLOGY "REQUEST PROCEDURE
TURN APPROACH."

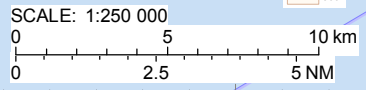
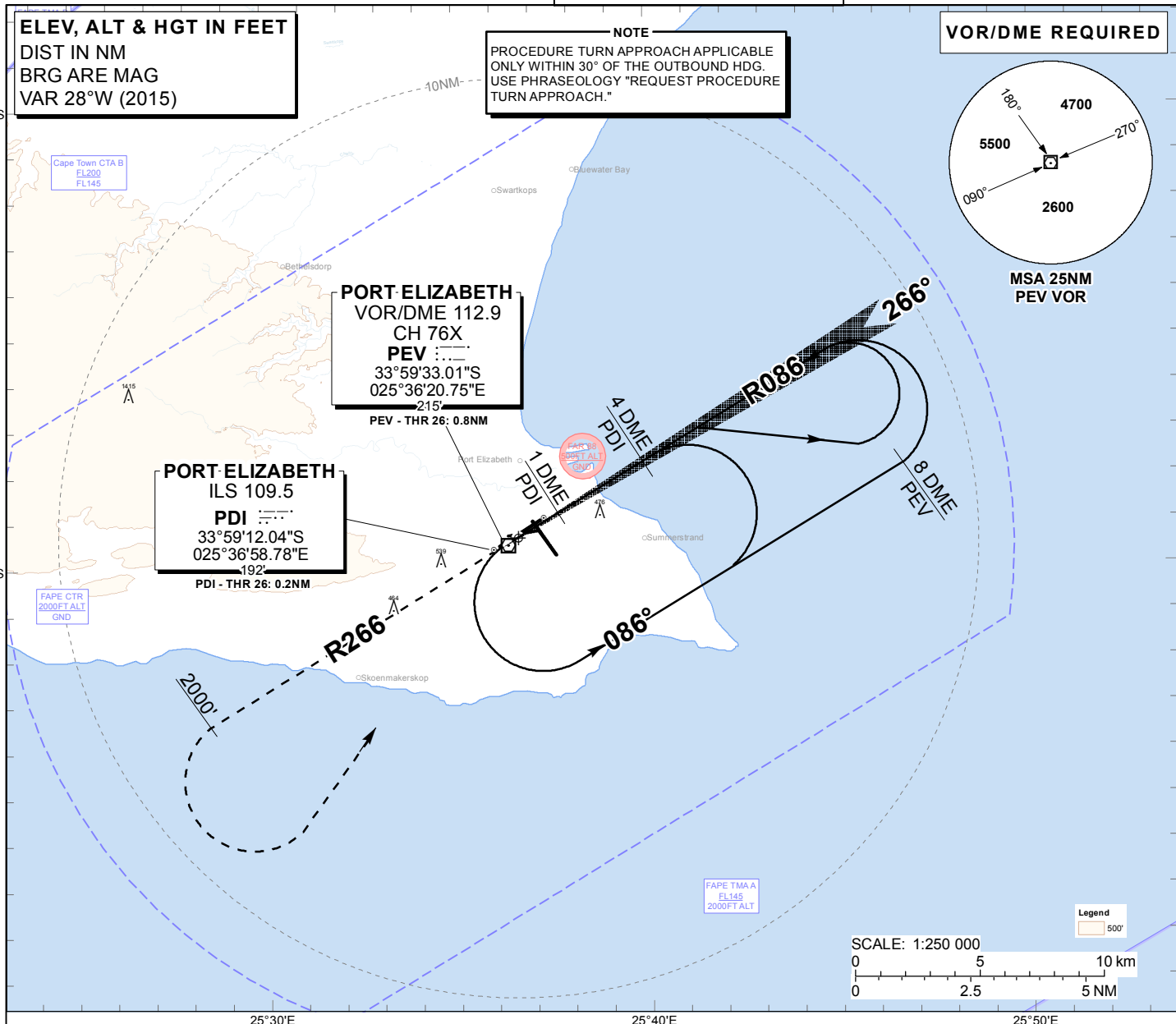
VOR/DME REQUIRED



MSA 25NM
PEV VOR

PORT ELIZABETH
VOR/DME 112.9
CH 76X
PEV :---
33°59'33.01"S
025°36'20.75"E
215'
PEV - THR 26: 0.8NM

PORT ELIZABETH
ILS 109.5
PDI :---
33°59'12.04"S
025°36'58.78"E
192'
PDI - THR 26: 0.2NM

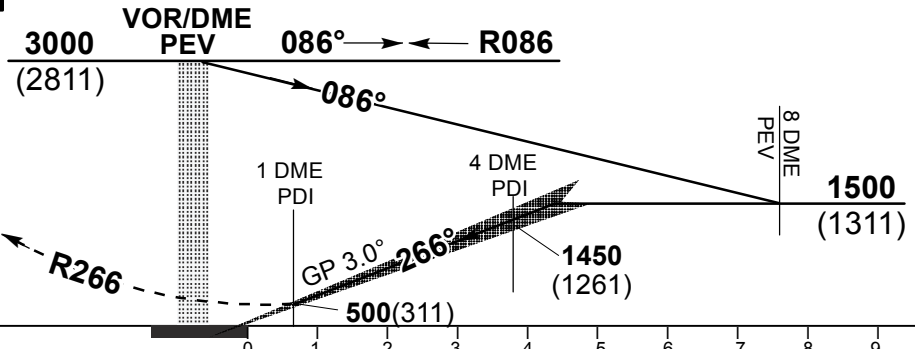


PDI /DME	4	3	2	1		
ADVISORY ALT(HGT)	1450 (1261)	1140 (951)	820 (631)	500 (311)		

TRANSITION ALT 5500
TRANSITION LEVEL ATC

INA ALT: 3000 or higher MSA

MISSED APPROACH:
Climb to 2000FT ALT.
Maintain RWY track
then turn left, climbing
to 3000FT ALT and
return to PEV.



ILS RDH 50
THR ELEV 189
NM to/from THR RWY 26

					GS	KT	80	100	120	140	160
					4.2 DME PDI - THR	M:S	2:58	2:23	1:59	1:42	1:29
					Rate of descent	FPM	425	531	637	743	849
					NOTE:						
CHANGE: CAT II Minima											
OCA (H)		A	B	C	D						
Straight-in Approach	CAT I	430 (241)	440 (251)	447 (258)	457 (268)						
	CAT II	342 (153)	348 (159)	361 (172)	371 (182)						
Circling	Circle to land at the discretion of the pilot in command.										